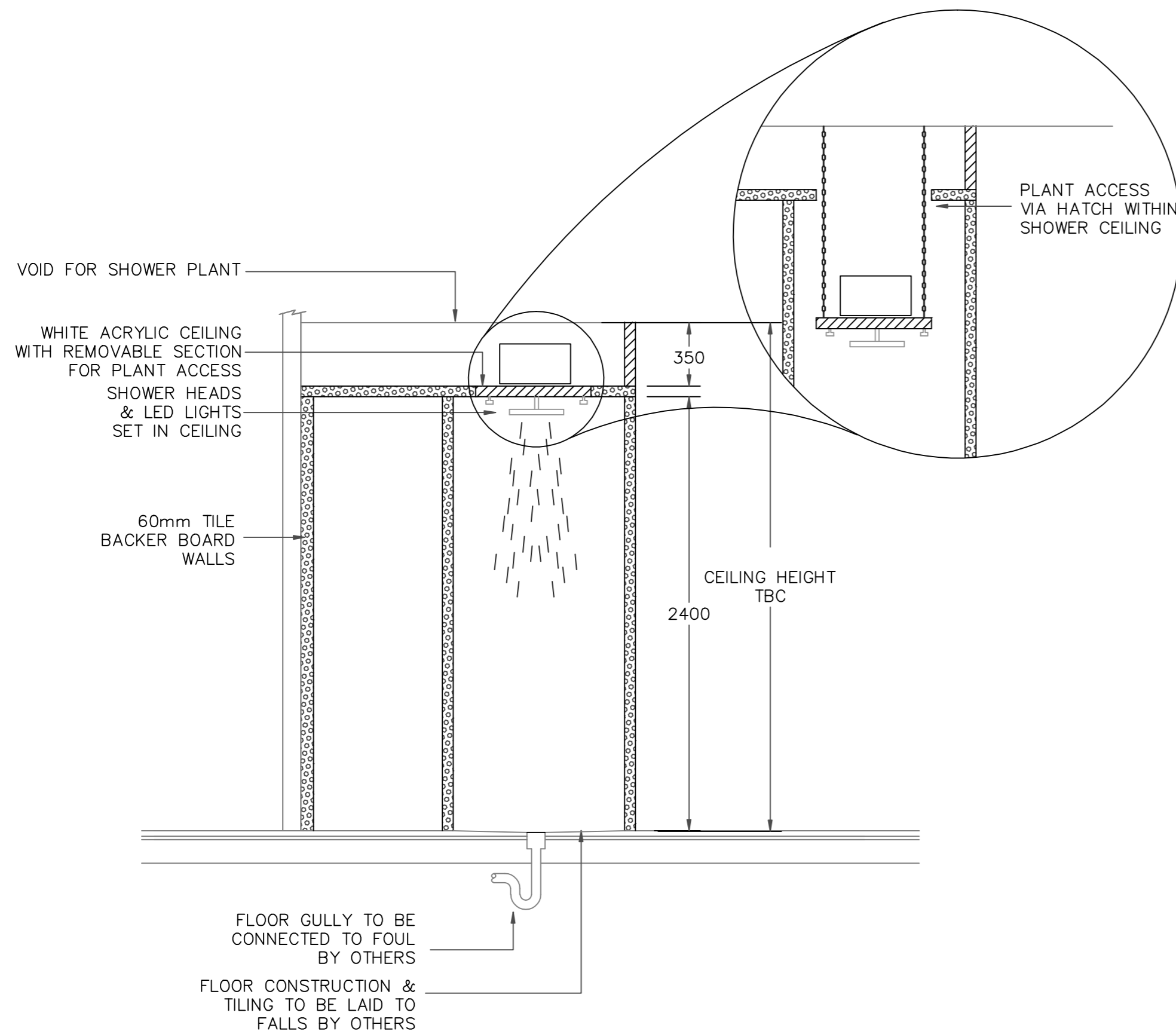


SEQUANA SHOWER PLAN



SEQUANA SHOWER SECTION

FEATURE SHOWER SERVICE REQUIREMENTS

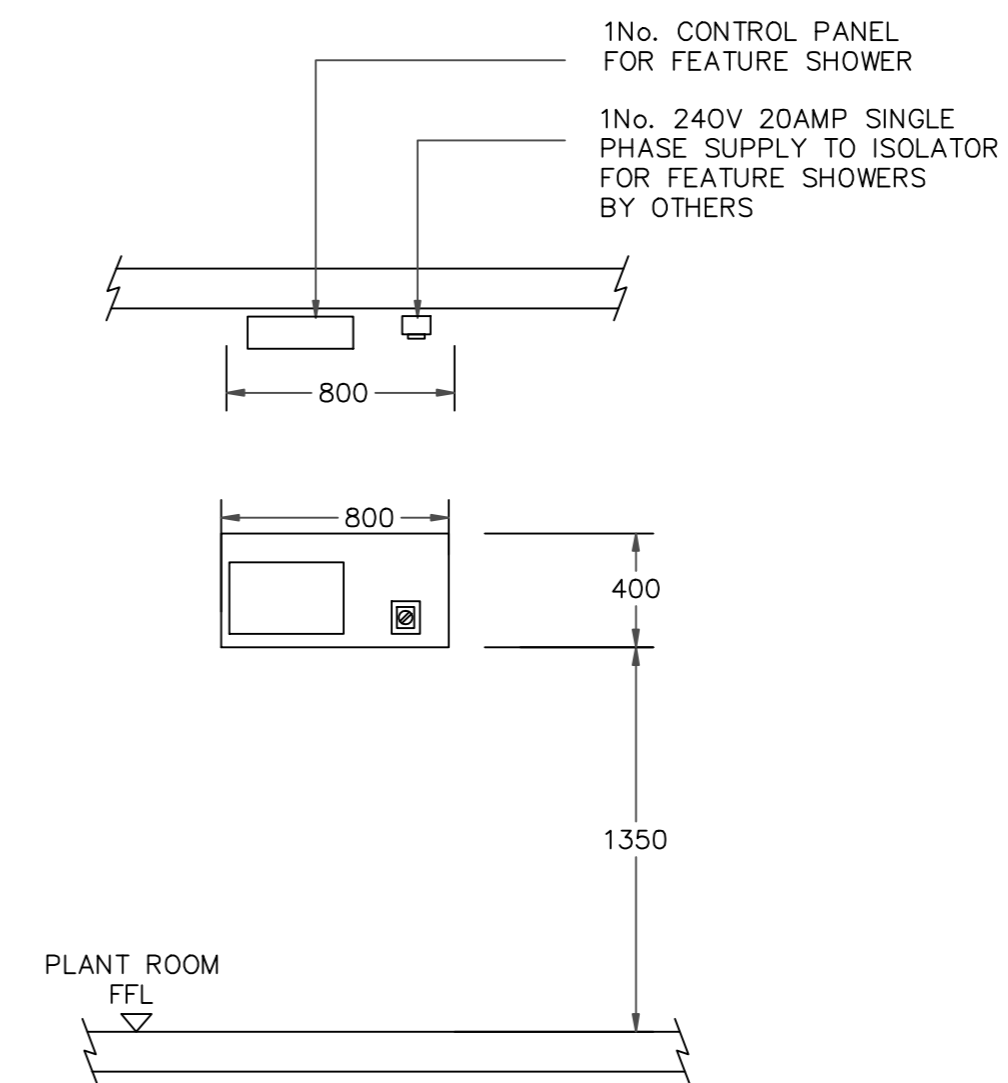
1NO. 240/1/50 20AMP ELECTRICAL SUPPLY TO A SWITCH FUSE ISOLATOR IN PLANT ROOM

2-3 BAR COLD WATER SUPPLY AT 25-35 LTR/MIN BY OTHERS REQUIRED ABOVE EACH FEATURE SHOWER.

1 BAR HOT WATER SUPPLY AT 30 LTR/MIN BY OTHERS REQUIRED ABOVE EACH FEATURE SHOWER.

FLOOR OF SHOWER BY OTHERS. THIS SHOULD BE CONSTRUCTED OF IMPERVIOUS MATERIAL WITH AN ADEQUATE DOWNWARD GRADIENT TO THE DRAIN. DRAIN SHOULD BE ABLE TO ACCOMMODATE A DISCHARGE FLOW RATE OF APPROX 65 LTR/MIN.

NB: PREFERRED LOCATION FOR TERMINATION OF WATER SUPPLY IS ABOVE THE SHOWER ENCLOSURE BUT CAN BE MOVED. EXACT POSITION TO BE CONFIRMED WITH M&E CONTRACTOR




SEQUANA SHOWER PLANT

NOTES:

All dimensions must be checked on site and not scaled from this drawing.

This drawing is the copyright of Aachen Wellness Limited. and must not be copied, in part or in full, or the contents divulged to any third party without the written approval of Aachen Wellness Limited.

Rev	Date	Amendments	By
 <i>Aachen Wellness.</i>			
Project Title			
STANDARD DRAWINGS			
Drawing Title			
SEQUANA SHOWER STANDARD			
Date		Scale	
22.07.10		1:25@A2	
Status			Drawn by
FOR COMMENT			RL
Drawing No.			Rev
11			*