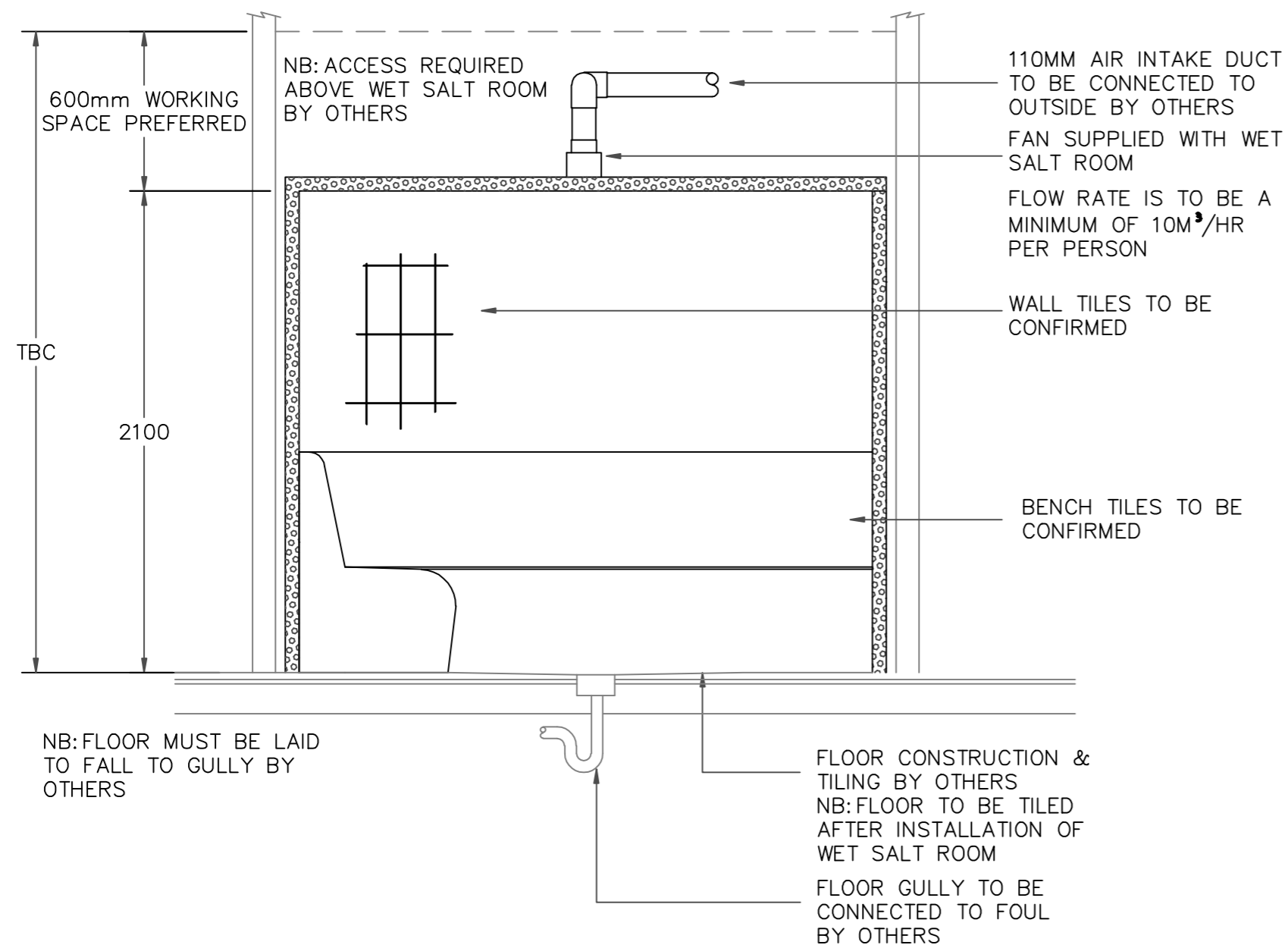


UZUME WET SALT ROOM PLAN



UZUME WET SALT ROOM SECTION

UZUME WET SALT ROOM SERVICE REQUIREMENTS

WET SALT ROOM TO BE FITTED ONTO A FLOOR WHICH IS WATER PROOF SCREEDED, BY OTHERS

WET SALT ROOM FLOOR TO BE TILED BY OTHERS AFTER STEAM ROOM HAS BEEN INSTALLED. GROUT TO BE EPOXY GROUT

WET SALT ROOM FLOOR TO BE CONSTRUCTED OF IMPERVIOUS MATERIALS WITH A 1:100 FALL TO A CENTRAL TRAPPED GULLY

110MM INTAKE VENT AND MECHANICAL FAN IS SUPPLIED WITH THE WET SALT ROOM, WET SALT ROOM INTAKE VENT TO BE VENTED TO OUTSIDE BY OTHERS

STEAM GENERATOR TO BE POSITIONED OUTSIDE THE WET SALT ROOM PREFERABLY WITHIN 5 METRES

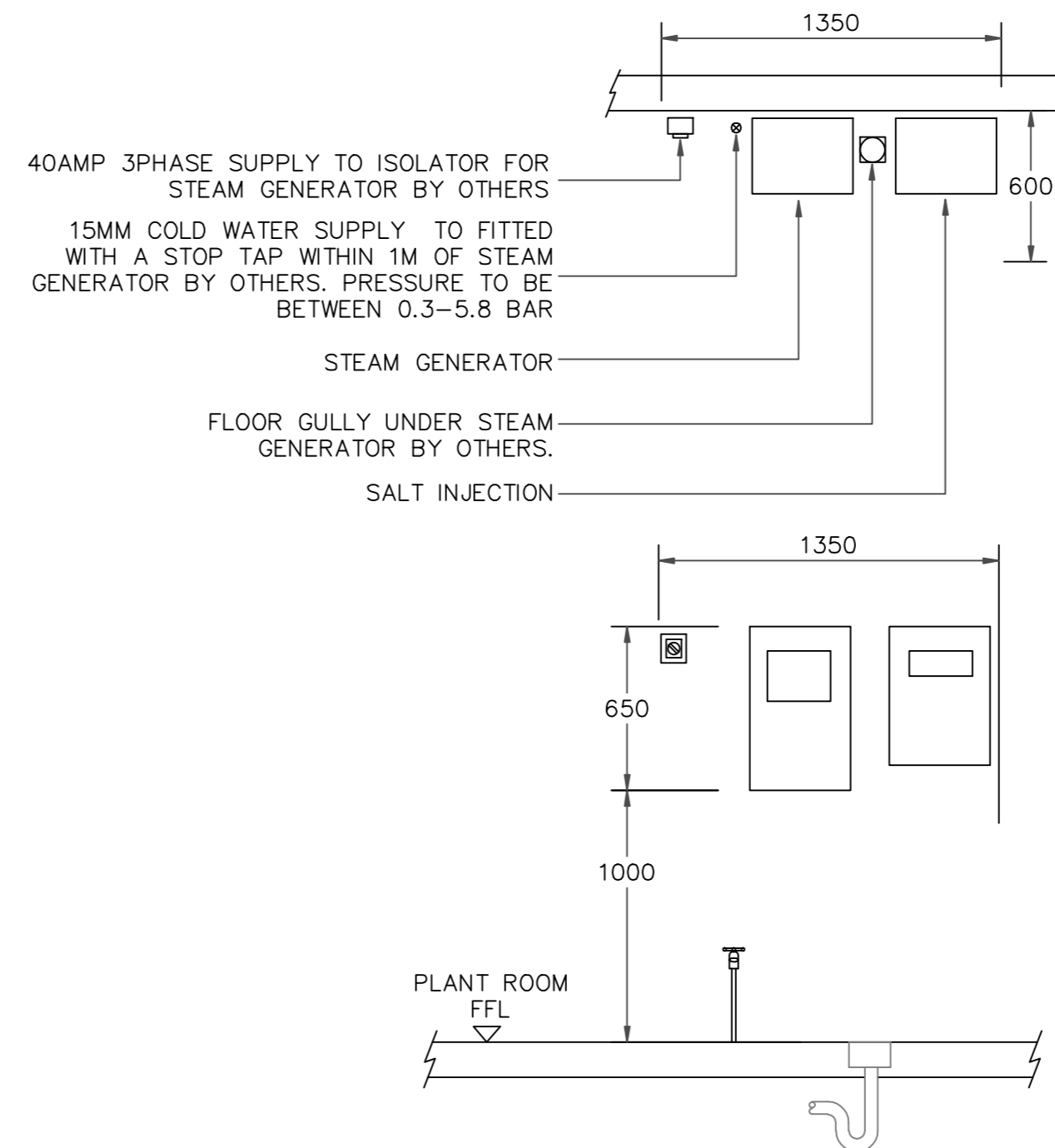
A TRAPPED GULLY CAPABLE OF TAKING 100 DEGREES C IS REQUIRED BELOW STEAM GENERATOR

15MM COLD WATER SUPPLY (PRESSURE BETWEEN 1 – 5.8 BAR) FITTED WITH A STOP TAP TO WITHIN 1 METRE OF GENERATOR IS REQUIRED BY OTHERS.

3 PHASE NEUTRAL SUPPLY AT 40 AMPS PER PHASE SUPPLIED TO AN ISOLATOR BY OTHERS ISOLATOR TO BE POSITIONED WITHIN 1 METRE OF STEAM GENERATOR

TEMPERATURE – 45–49°C
HUMIDITY – 100%

PLEASE NOTE THAT SERVICE REQUIREMENTS ARE DEPENDANT UPON ROOM SIZE.




UZUME WET SALT ROOM PLANT

NOTES:

All dimensions must be checked on site and not scaled from this drawing.

This drawing is the copyright of Aachen Wellness Limited. and must not be copied, in part or in full, or the contents divulged to any third party without the written approval of Aachen Wellness Limited.

NB: A MINIMUM ALLOWANCE OF 600MM OF SEATING SPACE SHOULD BE ALLOWED FOR EACH PERSON

Rev	Date	Amendments	By
 Aachen Wellness.			
Project Title			
STANDARD DRAWINGS			
Drawing Title			
UZUME WET SALT SPECIALIST			
Date		Scale	
22.07.10		1:25@A2	
Status			Drawn by
FOR COMMENT			RL
Drawing No.			Rev
06			*