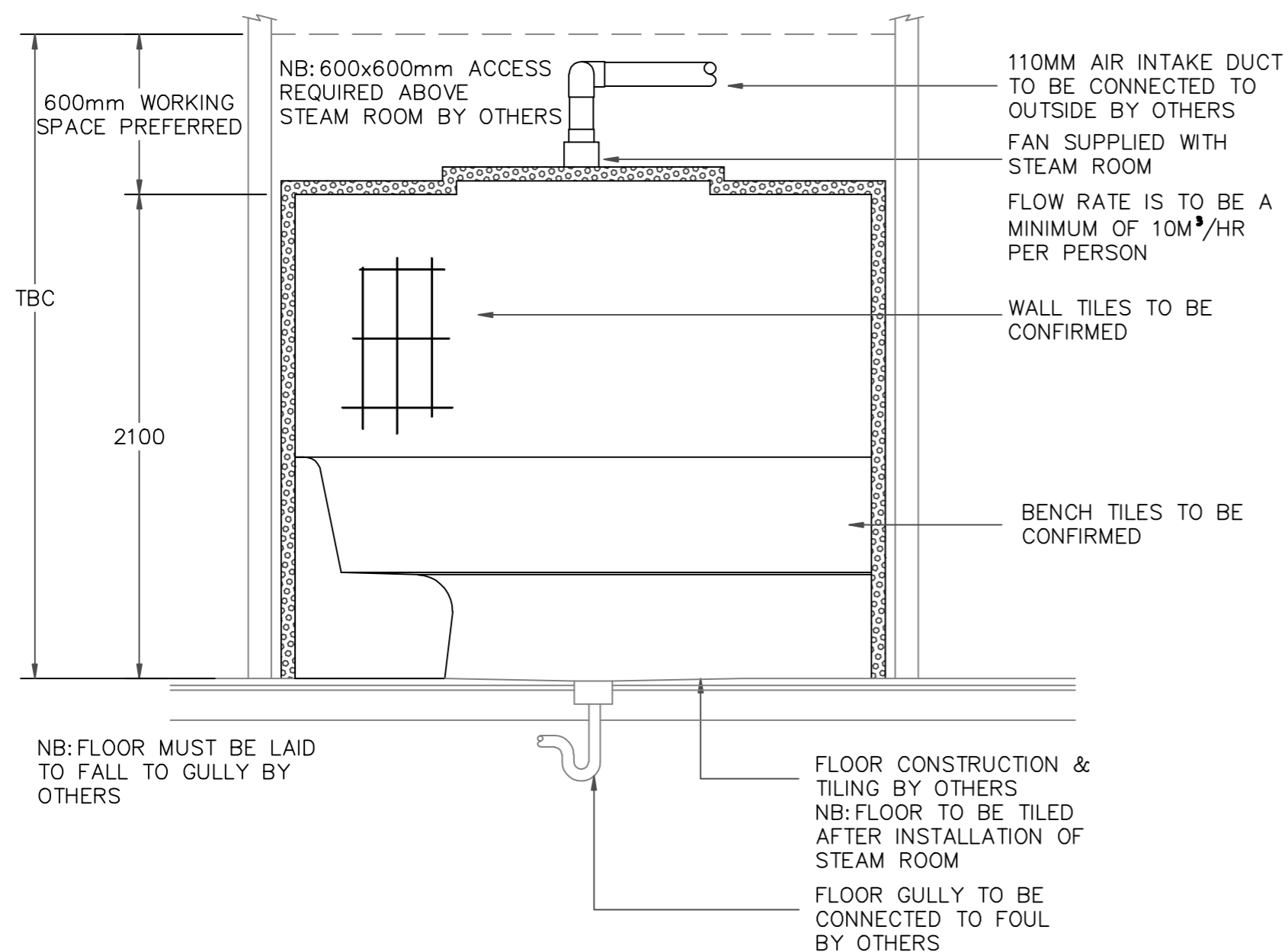


**FREYJA STEAM ROOM PLAN**



**FREYJA STEAM ROOM SECTION**

**FREYJA STEAM ROOM SERVICE REQUIREMENTS**

STEAM ROOM TO BE FITTED ONTO A FLOOR WHICH IS WATER PROOF SCREEDED, BY OTHERS

STEAM ROOM FLOOR TO BE TILED BY OTHERS AFTER STEAM ROOM HAS BEEN INSTALLED. GROUT TO BE EPOXY GROUT

STEAM ROOM FLOOR TO BE CONSTRUCTED OF IMPERVIOUS MATERIALS WITH A 1:100 FALL TO A CENTRAL TRAPPED GULLY

110MM INTAKE VENT AND MECHANICAL FAN IS SUPPLIED WITH THE STEAM ROOM, STEAM ROOM INTAKE VENT TO BE VENTED TO OUTSIDE BY OTHERS

STEAM GENERATOR TO BE POSITIONED OUTSIDE THE STEAM ROOM PREFERABLY WITHIN 5 METRES

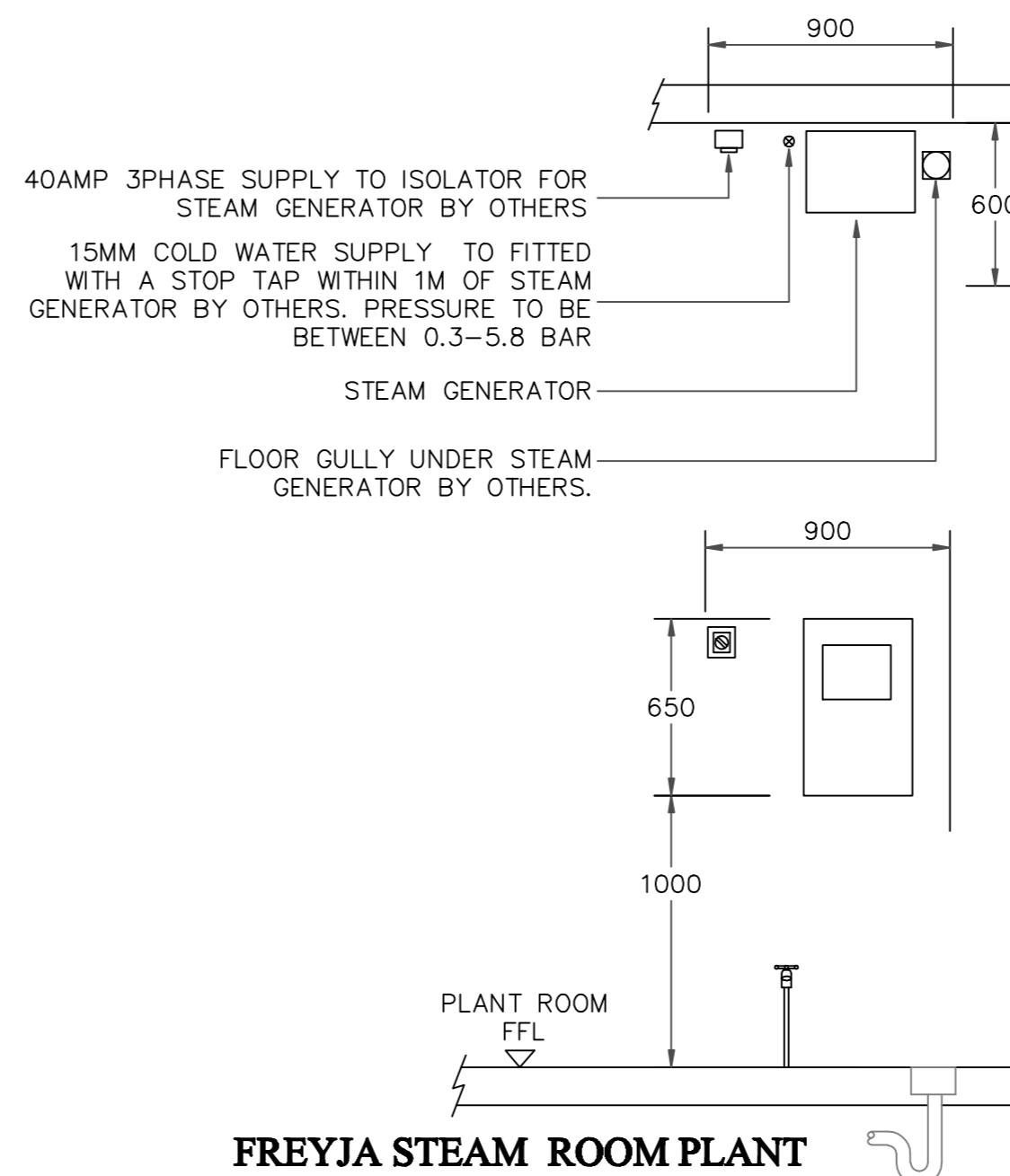
A TRAPPED GULLY CAPABLE OF TAKING 100 DEGREES C IS REQUIRED BELOW STEAM GENERATOR

15MM COLD WATER SUPPLY (PRESSURE BETWEEN 1 - 5.8 BAR) FITTED WITH A STOP TAP TO WITHIN 1 METRE OF GENERATOR IS REQUIRED BY OTHERS.

3 PHASE NEUTRAL SUPPLY AT 40 AMPS PER PHASE SUPPLIED TO AN ISOLATOR BY OTHERS ISOLATOR TO BE POSITIONED WITHIN 1 METRE OF STEAM GENERATOR

TEMPERATURE - 45-49°C  
HUMIDITY - 100%

PLEASE NOTE THAT SERVICE REQUIREMENTS ARE DEPENDANT UPON ROOM SIZE.




**FREYJA STEAM ROOM PLANT**

**NOTES:**

All dimensions must be checked on site and not scaled from this drawing.

This drawing is the copyright of Aachen Wellness Limited. and must not be copied, in part or in full, or the contents divulged to any third party without the written approval of Aachen Wellness Limited.

NB: A MINIMUM ALLOWANCE OF 600MM OF SEATING SPACE SHOULD BE ALLOWED FOR EACH PERSON

Rev	Date	Amendments	By
 <i>Aachen Wellness.</i>			
<b>Project Title</b>			
<b>STANDARD DRAWINGS</b>			
<b>Drawing Title</b>			
<b>FREYJA STEAM ROOM PREMIUM</b>			
<b>Date</b>		<b>Scale</b>	
22.07.10		1:25@A2	
<b>Status</b>			<b>Drawn by</b>
FOR COMMENT			RL
<b>Drawing No.</b>			<b>Rev</b>
05			*